

NOTES

SPECIFICATION OF TREE STOCK
 Proposed trees will be specified as scheduled and defined from the HTA (Horticultural Trades Association) National Plant Specification. Trees will be selected from nurseries that adhere to this UK standard to ensure quality supplied and planted is exactly what is specified. The HTA specifies provenance and other criteria such as times transplanted and overall form.

TREES GENERALLY

Tree Spacing Out

The exact location of trees is to be defined at a later stage based on the principles below:
 Proposed trees are to be located 1000mm from the outside edge of the proposed kerb line at all times and trees must run in a consistent line parallel with the kerb.
Spacing:
 Trees to be placed at 7m centres between trunks

Species Selection:

Species to be planted at 7m centres between trunks
 Species to be semi mature size with a 3000mm clear stem and of columnar habit and form. Species selection will suit planting within hard landscape and be tolerant of urban conditions. Consideration will be given to the Section 73 Tree Strategy and consultation with London Borough of Barnet's tree officer will be undertaken before the species are finalised.

Tree Pits:

Tree pit aperture at street level to be 1000mm max width to ensure minimum clear footway width of 2000mm. Aperture to be filled level with adjacent footway surface with a robust, self draining material that does not deviate from finish levels.
 Tree pit depth to be 1.5 times size of the rootball. Width to be 2000mm maximum with horizontal bases and vertical sides. Pit bottoms to have slightly raised centre, broken up to a depth of 200 mm with a layer of 50mm aggregate to ensure tree pits are free-draining before planting. Backfill medium to contain structural tree soil where required.
 Pit to contain a tree anchoring system, watering system and root barriers installed where trees are within 2m of a building foundation and 500mm of service routes.

SUPPLY & AFTERCARE

Trees selected will be grown and procured through UK nurseries. All new planting shall comply with the requirements specified in BS 3936-1:1992 Specification of nursery stock; Part 1. Trees and Shrubs and BS 4428: 1989 Recommendations for General Landscape Operations.

Transport:

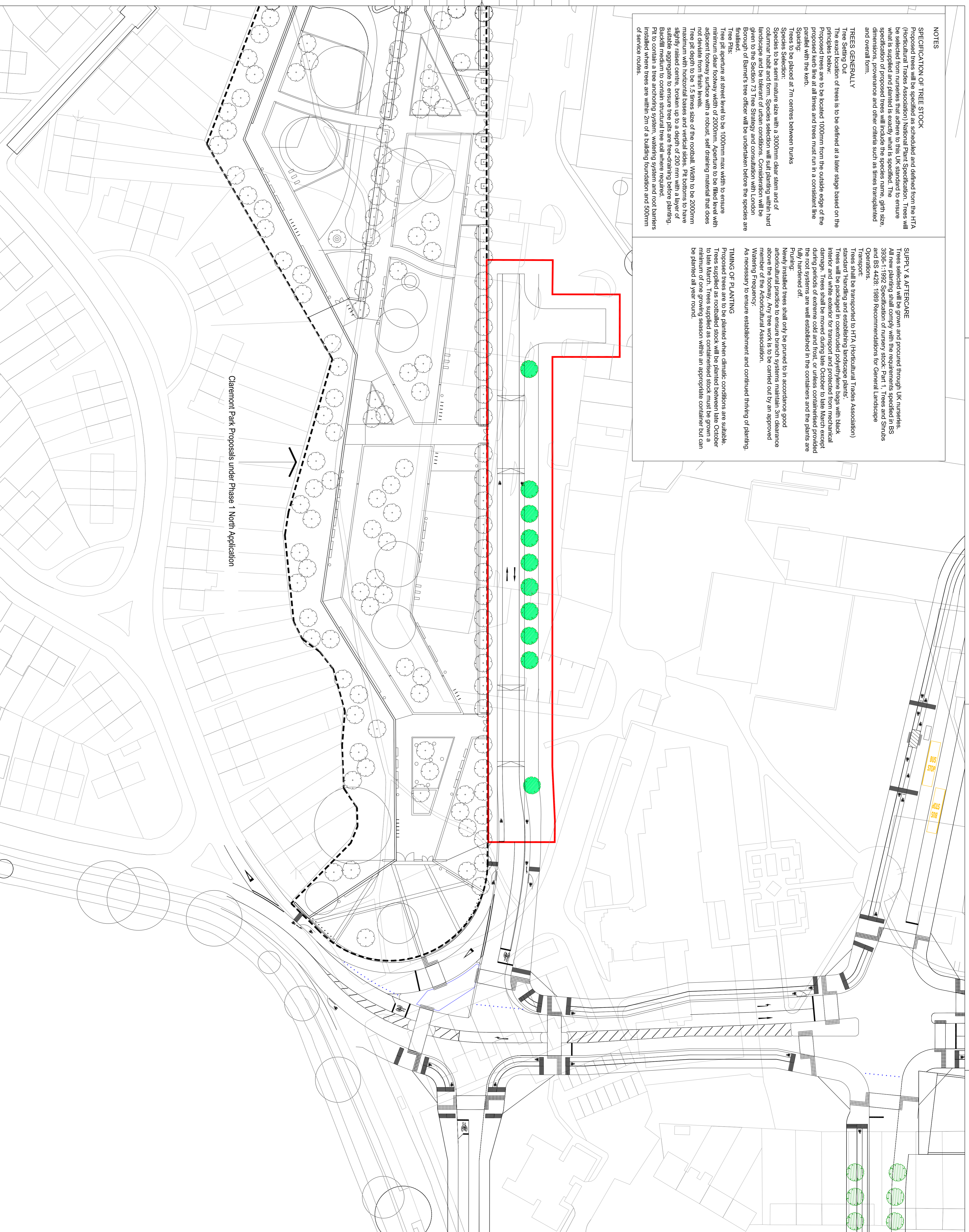
Trees shall be transported to HTA (Horticultural Trades Association) standard Handling and establishing landscape plants.
 Trees will be packaged in coextruded polyethylene bags with black interior and white exterior for transport and protected from mechanical damage. Trees shall be moved during late October to late March except during periods of extreme cold and frost, or unless containerised provided the root systems are well established in the containers and the plants are fully hardened off.

Pruning:

Newly installed trees shall only be pruned to in accordance good arboricultural practice to ensure branch systems maintain 3m clearance above the footway. Any tree work is to be carried out by an approved member of the Arboricultural Association.
Watering Frequency:
 As necessary to ensure establishment and continued thriving of planting.

TIMING OF PLANTING

Proposed trees are to be planted when climatic conditions are suitable. Trees supplied as rootballed stock will be planted between late October to late March. Trees supplied as containerised stock must be grown a minimum of one growing season within an appropriate container but can be planted all year round.



Clarendon Park Proposals under Phase 1 North Application

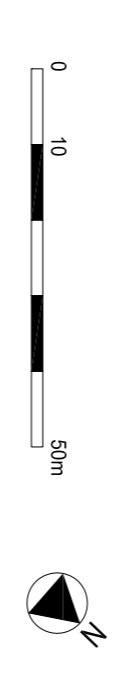
BUILDING DESIGN PARTNERSHIP SHALL HAVE NO RESPONSIBILITY FOR ANY USE OF THIS DOCUMENT OTHER THAN THAT FOR WHICH IT WAS PREPARED AND ALL DIMENSIONS SHOULD BE CHECKED ON SITE.
 DO NOT SCALE FOR CONSTRUCTION PURPOSES.
 ANY ERRORS OR DISCREPANCIES SHOULD BE BROUGHT TO THE ATTENTION OF BUILDING DESIGN PARTNERSHIP AT THE ADDRESS SHOWN BELOW.

NOTES

Refer to drawing (97)LP004 for Tree Removal as part of Phase 1 South Reserved Matters Application.

LEGEND

- Boundary of Clarendon Park Road (Part 1) Reserved Matters Application
- Proposed Boundary of New Clarendon Park under Phase 1 North Application
- Proposed Trees within Clarendon Park Road (Part 1) Reserved Matters Application. See Notes
- Proposed Trees within School Lane Reserved Matters Application
- Trees and Vegetation to be Retained
- Trees and Vegetation Proposed under Phase 1 North Reserved Matters Application



FIRST ISSUE FOR INFORMATION YL MS 22.10.15



16 Broomhouse Yard
 London EC1V 4JL
 United Kingdom
 T +44 (0)207 812 8000
 F +44 (0)207 812 8399
 www.bdp.com

BRENT CROSS PHASE 1A SOUTH

PROJECT NO: P2007004
 DRAWING TITLE: CLAREMONT PARK ROAD (PART 1) LANDSCAPE GENERAL ARRANGEMENT PLAN
 DATE: 22/10/15
 SCALE: 1:1000 @ A3